

PV - Mounting Systems

Make the most of our experience in construction.



oberhauser
Bau » Systeme

Product- and Pricelist

www.oberhauser-pv.de

Contents

Aluminium profiles	P. 3
Roof connectors for tiled roofs	P. 4
Roof connectors for metal roofs	P. 4
Module clamps	P. 6
Accessories	P. 7

Version: May 2021

Aluminium profiles

Profile Easy 40 x 40

Item no.:	1034040
Dimensions:	40x40 mm
Material:	EN AW 6063
Unit:	1 meter
Price/unit:	7,41



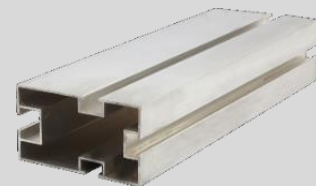
Profile Easy 59 x 59

Item no.:	1035959
Dimensions:	59x59 mm
Material:	EN AW 6063
Unit:	1 meter
Price/unit:	17,17



Profile Easy 60 x 100

Item no.:	10360100
Dimensions:	60x100 mm
Material:	EN AW 6063
Unit:	1 meter
Price/unit:	18,97



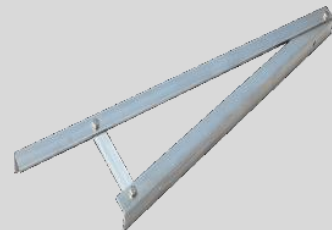
Flat roof triangle large

Item no.:	104100120
Dimensions:	10° - 45°
Material:	EN AW 6063
Unit:	1 piece
Price/unit:	42,05



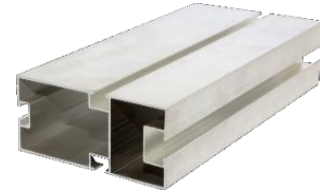
Flat roof triangle small

Item no.:	104100120K
Dimensions:	10° - 45°
Material:	EN AW 6063
Unit:	1 piece
Price/unit:	38,17



Profile Easy 60 x 145

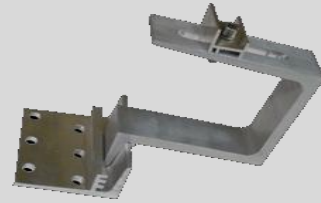
Item no.:	10360145
Dimensions:	60x145 mm
Material:	EN AW 6063
Unit:	1 meter
Price/unit:	25,37



Roof connectors for tiled roofs

Roof hook Alu Easy

Item no.:	271E
Dimensions:	40x10 mm
Material:	EN AW 6060
Unit:	1 piece
Price/unit:	10,29



Roof hook "Biber" 30x5

Item no.:	2530BI
Dimensions:	30x5 mm
Material:	1.4301
Unit:	1 piece
Price/unit:	12,51



Roof hook "Biber" 40x6

Item no.:	2640BI
Dimensions:	40x6 mm
Material:	1.4301
Unit:	1 piece
Price/unit:	15,29



Roof connectors for metal roofs

Clamp for standing seam sheet

Item no.:	340501005
Dimensions:	40x50x100mm
Material:	1.4301
Unit:	1 piece
Price/unit:	10,56



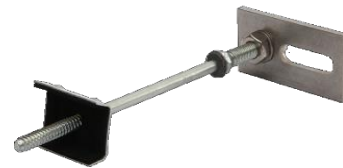
Clamp for "Kalzip"- sheet

Item no.:	3KALZ
Dimensions:	55x45x38 mm
Material:	1.4301
Unit:	1 piece
Price/unit:	4,87



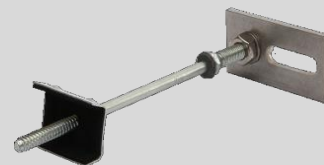
Hanger bolt for steel 8x100

Item no.:	4100S
Dimensions:	8x100 mm
Material:	A2/EPDM
Unit:	1 piece
Price/unit:	6,34



Hanger bolt for steel 8x150

Item no.:	4150S
Dimensions:	8x150 mm
Material:	A2/EPDM
Unit:	1 piece
Price/unit:	6,63



Hanger bolt for steel 8x200

Item no.:	4200S
Dimensions:	8x200 mm
Material:	A2/EPDM
Unit:	1 piece
Price/unit:	7,93



Hanger bolt for wood 10x200

Item no.:	4200
Dimensions:	10x200 mm
Material:	A2/EPDM
Unit:	1 piece
Price/unit:	3,49



Hanger bolt for wood 10x250

Item no.:	4250
Dimensions:	10x250 mm
Material:	A2/EPDM
Unit:	1 piece
Price/unit:	4,63



Hanger bolt for wood 10x300

Item no.:	4300
Dimensions:	10x300 mm
Material:	A2/EPDM
Unit:	1 piece
Price/unit:	5,55



Trapez - EASY 350

Item no.:	3350THALU
Dimensions:	350x100 mm
Material:	EN AW 6063
Unit:	1 piece
Price/unit:	6,18



Module clamps

Middle clamp "Klick Easy"

Item no.:	529060
Dimensions:	60 mm
Material:	EN AW6060/A2
Unit:	1 piece
Price/unit:	1,20



End clamp "Klick Easy"

Item no.:	5260V
Dimensions:	60 mm
Material:	EN AW6060/A2
Unit:	1 piece
Price/unit:	1,55



Thin film middle clamp "Klick"

Item no.:	60806EA
Dimensions:	70 mm
Material:	EN AW6060
Unit:	1 piece
Price/unit:	2,89



Thin film end clamp "Klick"

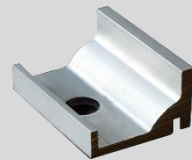
Item no.:	60806EEA
Dimensions:	70 mm
Material:	EN AW6060
Unit:	1 piece
Price/unit:	2,62



Accessories

Cross connector

Item no.:	7040
Dimensions:	40 mm
Material:	EN AW6060
Unit:	1 piece
Price/unit:	0,53



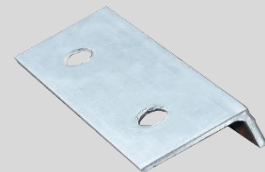
Cross connector Easy

Item no.:	7040E
Dimensions:	40 mm
Material:	EN AW6060/A2
Unit:	1 piece
Price/unit:	1,24



Profile connector 2 - hole

Item no.:	70100
Dimensions:	100 mm
Material:	EN AW6060
Unit:	1 piece
Price/unit:	1,84



Profile connector 2 - hole Easy

Item no.:	70100E
Dimensions:	100 mm
Material:	EN AW6060/A2
Unit:	1 piece
Price/unit:	3,37



Profile connector 4 - hole

Item no.:	70200
Dimensions:	200 mm
Material:	EN AW6060
Unit:	1 piece
Price/unit:	2,81



Profile connector 4 - hole Easy

Item no.:	70200E
Dimensions:	200 mm
Material:	EN AW6060/A2
Unit:	1 piece
Price/unit:	5,30



Hexagonal bolt M10x20

Item no.:	81020
Dimensions:	10x20 mm
Material:	A2
Unit:	100 pieces
DIN	933
Price/unit:	25,68



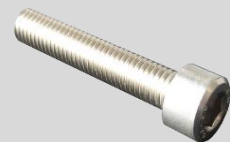
Hammerhead bolt M10x25

Item no.:	81020HK
Dimensions:	10x25 mm
Material:	A2
Unit:	100 pieces
Price/unit:	37,09



Cylinder head bolt M8 x 20

Item no.:	8820Z
Dimensions:	8x20 mm
Material:	A2
Unit:	100 pieces
DIN	912
Price/unit:	21,30



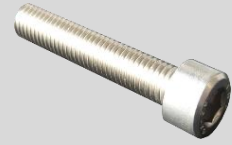
Cylinder head bolt M8 x 25

Item no.:	8825Z
Dimensions:	8x25 mm
Material:	A2
Unit:	100 pieces
DIN	912
Price/unit:	24,57



Cylinder head bolt M8 x 30

Item no.:	8830Z
Dimensions:	8x30 mm
Material:	A2
Unit:	100 pieces
DIN	912
Price/unit:	26,18



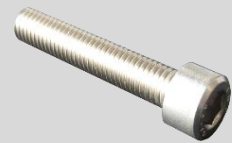
Cylinder head bolt M8 x 35

Item no.:	8835Z
Dimensions:	8x35 mm
Material:	A2
Unit:	100 pieces
DIN	912
Price/unit:	29,04



Cylinder head bolt M8 x 40

Item no.:	8840Z
Dimensions:	8x40 mm
Material:	A2
Unit:	100 pieces
DIN	912
Price/unit:	32,02



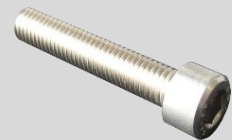
Cylinder head bolt M8 x 45

Item no.:	8845Z
Dimensions:	8x45 mm
Material:	A2
Unit:	100 pieces
DIN	912
Price/unit:	34,84



Cylinder head bolt M8 x 50

Item no.:	8850Z
Dimensions:	8x50 mm
Material:	A2
Unit:	100 pieces
DIN	912
Price/unit:	37,00



Self sealing screw 6.0 x 25

Item no.:	86025D
Dimensions:	6.0x25 mm
Material:	A2/EPDM
Unit:	100 pieces
Price/unit:	64,99



Wafer-head screw, stainless steel

Item no.:	88100TE
Dimensions:	8x100 mm
Material:	A2
Unit:	100 pieces
Price/unit:	79,25



Wafer-head screw, galvanised

Item no.:	88100TV
Dimensions:	8x100 mm
Material:	galv. Steel
Unit:	100 pieces
Price/unit:	29,80



Wafer-head screw, galvanised

Item no.:	88120TV
Dimensions:	8x120 mm
Material:	galv. Steel
Unit:	100 pieces
Price/unit:	34,87



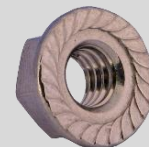
Locking nut M8

Item no.:	98MS
Dimensions:	8 mm
Material:	A2
Unit:	100 pieces
DIN	6923
Price/unit:	10,65



Locking nut M10

Item no.:	910MS
Dimensions:	10 mm
Material:	A2
Unit:	100 pieces
DIN	6923
Price/unit:	13,63



Square nut

Item no.:	98MV
Dimensions:	8 mm
Material:	A2
Unit:	100 pieces
DIN	557
Price/unit:	6,66



Locking washer M8

Item no.:	8928
Dimensions:	M 8
Material:	A2
Unit:	100 pieces
DIN	6796
Price/unit:	3,42



Locking washer M10

Item no.:	89210
Dimensions:	M 10
Material:	A2
Unit:	100 pieces
DIN	6796
Price/unit:	10,46



Locking washer M12

Item no.:	89212
Dimensions:	M 12
Material:	A2
Unit:	100 pieces
DIN	6796
Price/unit:	17,44



Securing washer M8

Item no.:	8938
Dimensions:	M 8
Material:	A2
Unit:	100 pieces
Price/unit:	4,76



Anti-theft ball

Item no.:	868KUGEL
Dimensions:	
Material:	A2
Unit:	100 pieces
Price/unit:	15,69



End cap

Item no.:	94040
Dimensions:	40x40 mm
Material:	Plastic
Unit:	100 pieces
Price/unit:	39,31



oberhauser

Bau » Systeme

Oberhauser
Bau-Systeme GmbH
Rohrbach-Bahnhof 18
84494 Niederbergkirchen
Deutschland

www.oberhauser-pv.de

E-Mail: info@oberhauser-pv.de
Tel.: +49 8635 69392-0
Fax: +49 8635 69392-20